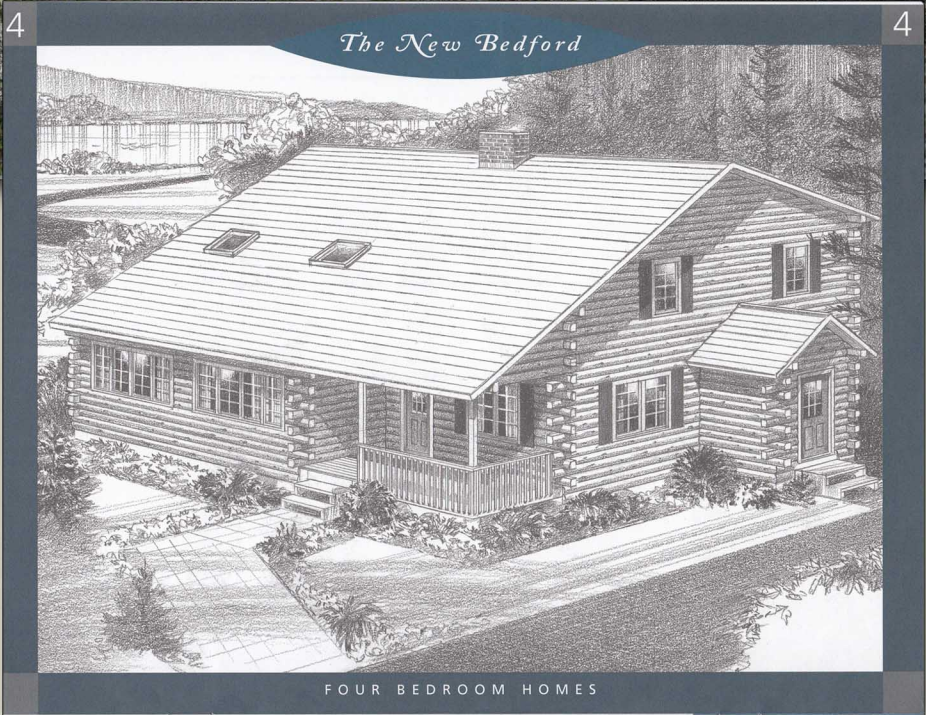
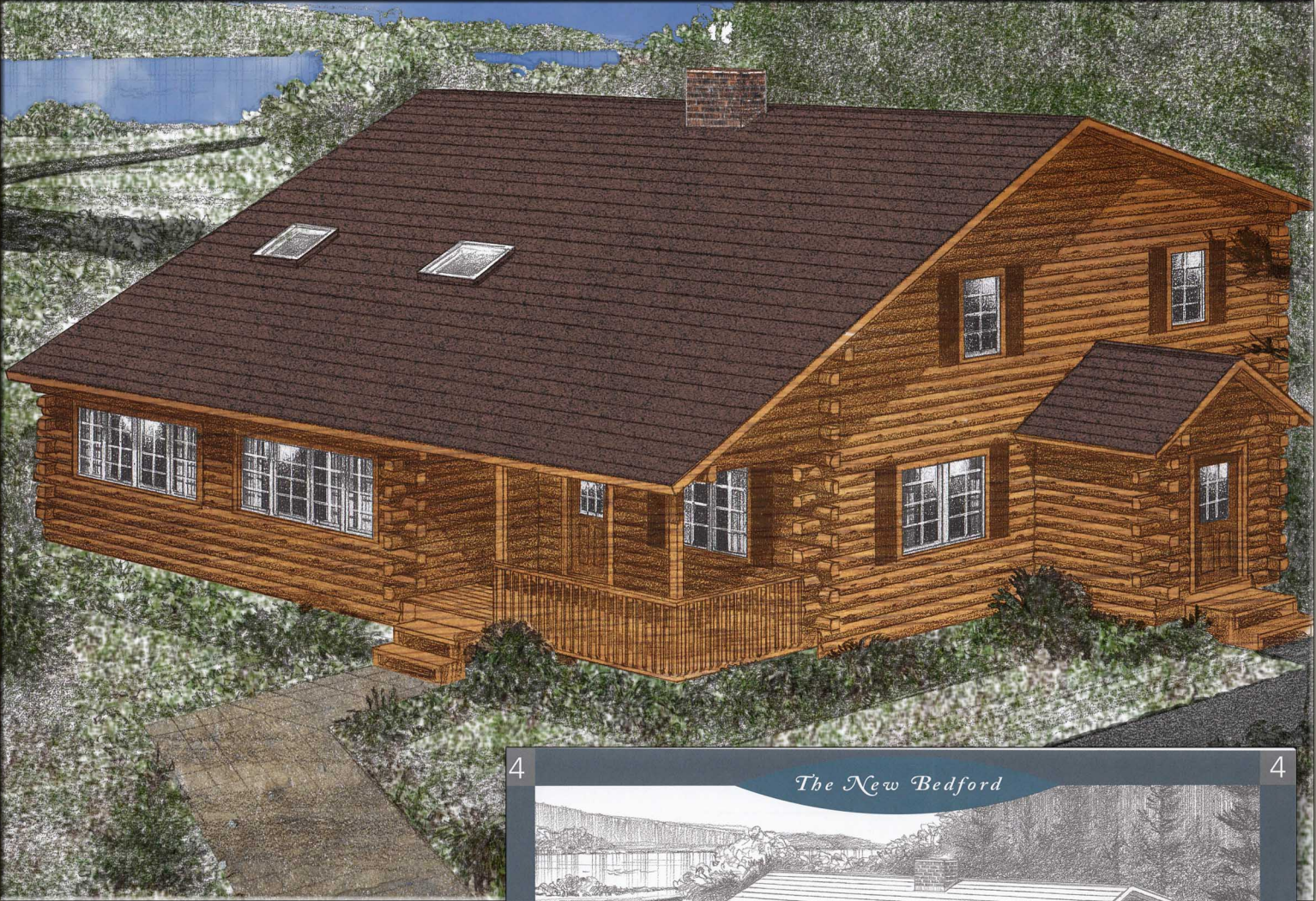




The New Bedford



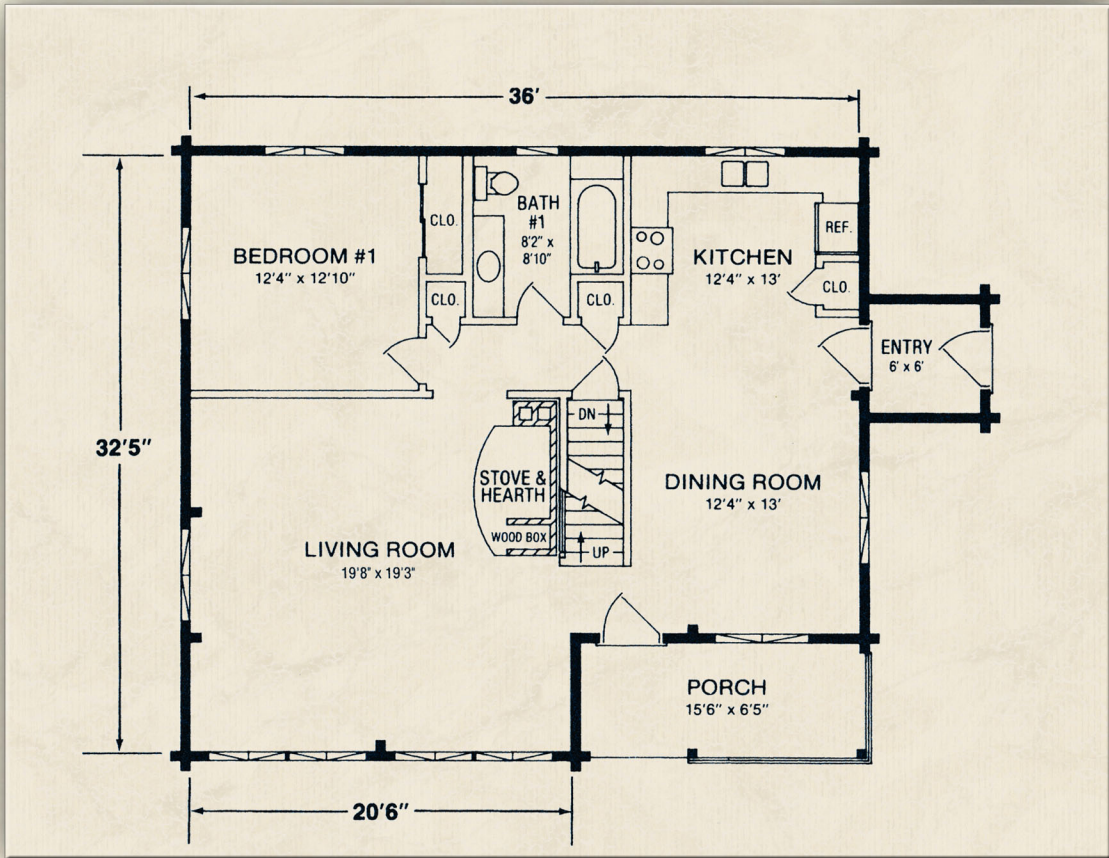
Northeastern Log Homes

info@northeasternlog.com 800-624-2797 www.northeasternlog.com

*Artist's rendering, photography and optional design ideas may vary from the standard model. Please always consult the standard floorplan and refer to the Premier Series material list as to what is included.



The New Bedford



Premier Home Series

32'-5" x 36' Size

1,840 Square Feet

Four Bedrooms

Two Baths

Price information
available for download
on our website

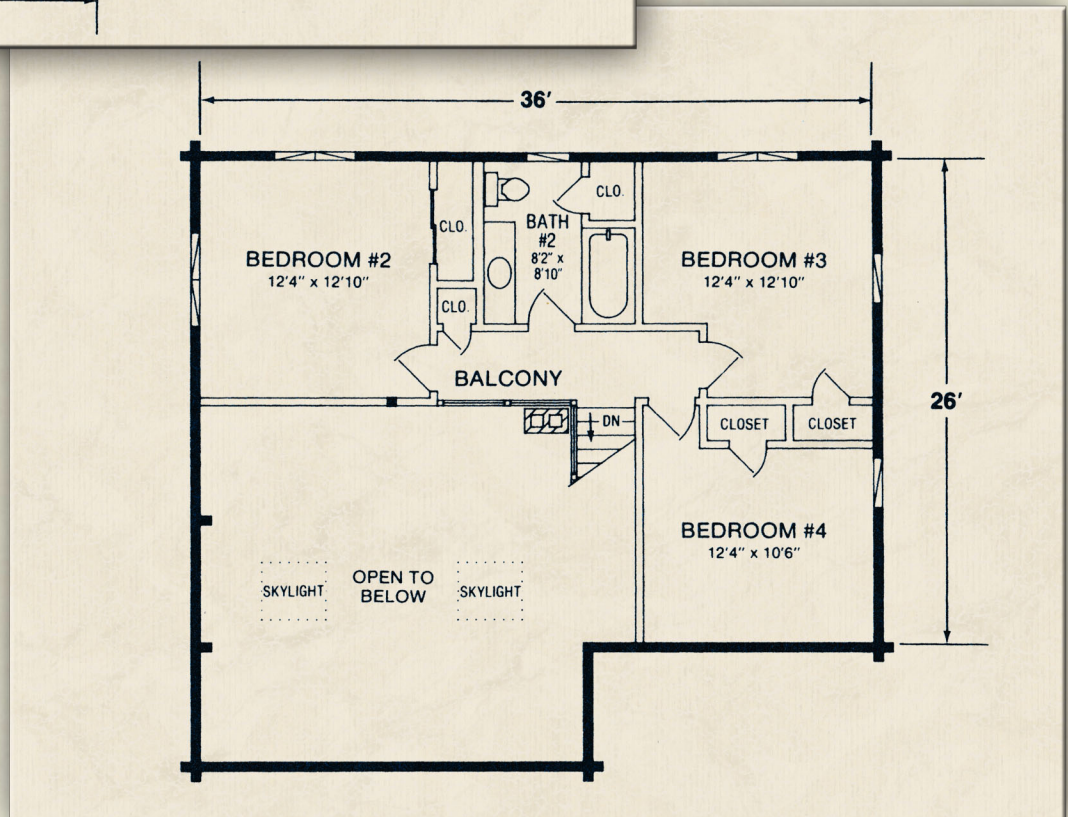
Optional Design Ideas

The Bedroom on the first floor can easily be made into a den, media room or added home office.

The stove and hearth can move to the left wall to open up more of the area of the living room.

The Entry area can be enlarged just a bit to generate a closet area or a place for a first floor washer and dryer.

The windows can be changed from casement to double-hung for a different, more classic look.

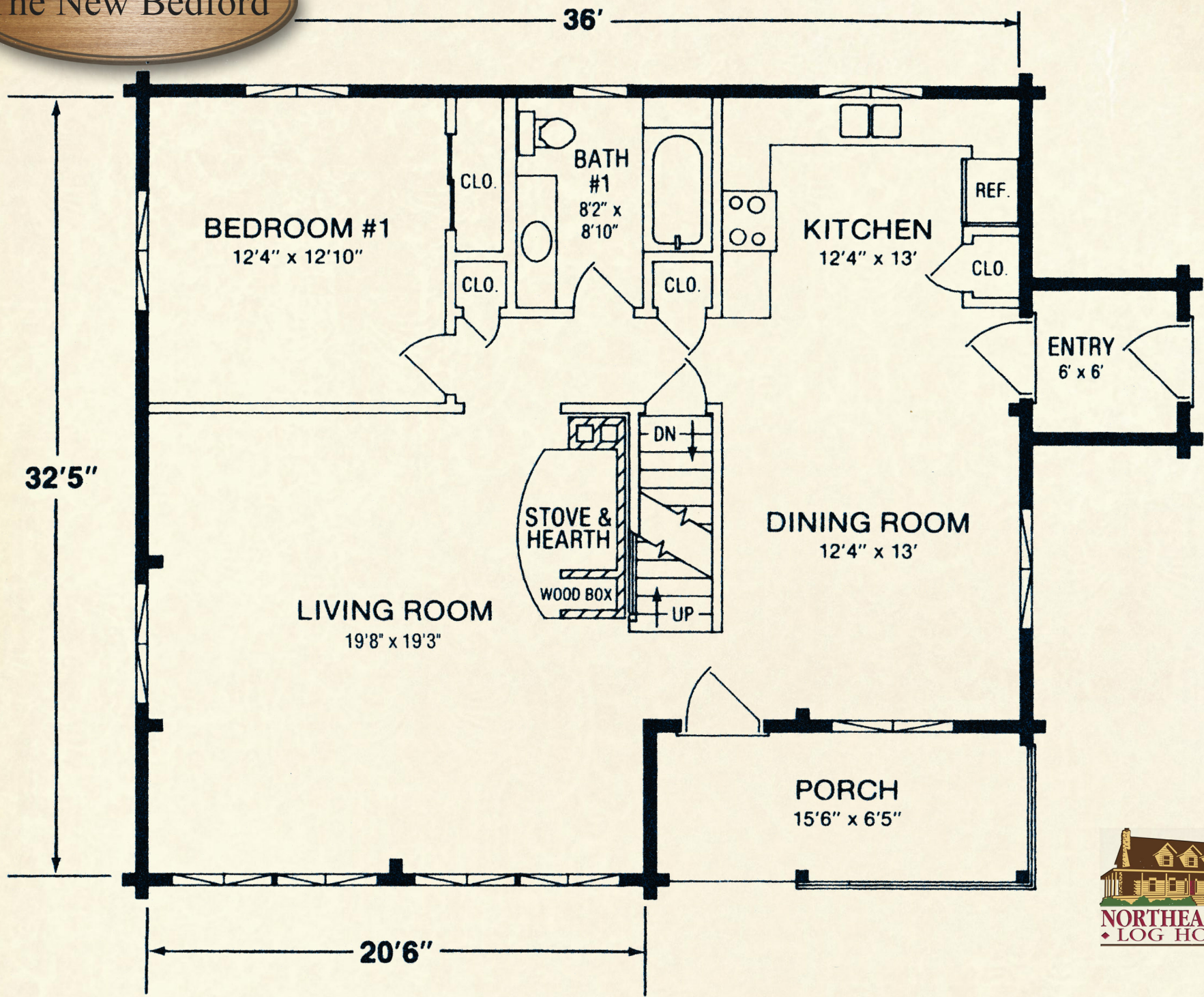


Northeastern Log Homes

info@northeasternlog.com 800-624-2797 www.northeasternlog.com

*Artist's rendering, photography and optional design ideas may vary from the standard model. Please always consult the standard floorplan and refer to the Premier Home Series material list as to what is included. All images and plans copyright Northeastern Log Homes

The New Bedford



The New Bedford

